



# SANAKO Study 500

## Performance Improving Teaching Software

SANAKO Study 500 is performance improving software for teaching, combining the use of multimedia and the Internet with a suite of essential classroom management tools. A must for modern teaching environments, the modular and expandable Study 500 is suitable for use in wireless LANs.\*

Study 500 supports teacher-led classroom interaction for the effective teaching of any subject, while its class management features ensure that teaching is more efficient.

*\*Some limitations may apply.*



**sanako**

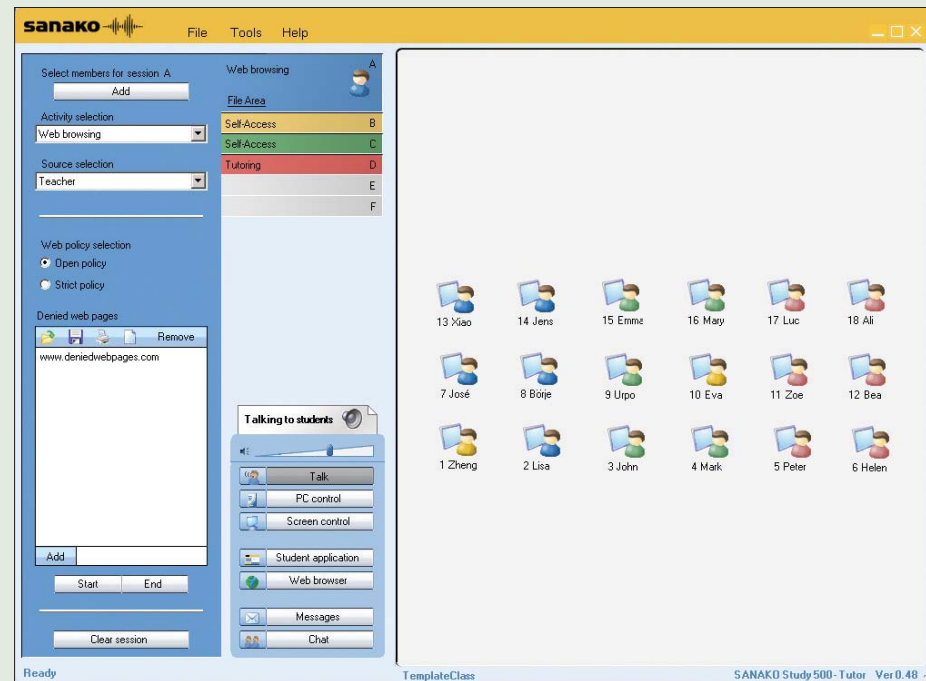


## Advanced Technology, Easy Functionality

SANAKO Study 500 is an outstanding solution, built on the latest Microsoft® .Net platform, easily integrated into existing ICT classroom infrastructure, and requires no special installation expertise.

Whether learning involves writing or Web-based exercises, the pre-set learning activities ensure that teachers can collaborate with and guide students during the teaching of any subject.

Easily recognized color-coded sessions allow teachers to divide students into groups for learning activities. Assigning students to sessions allows for differentiation in teaching and learning as different groups can work on different activities.



## Communication to Reinforce Learning

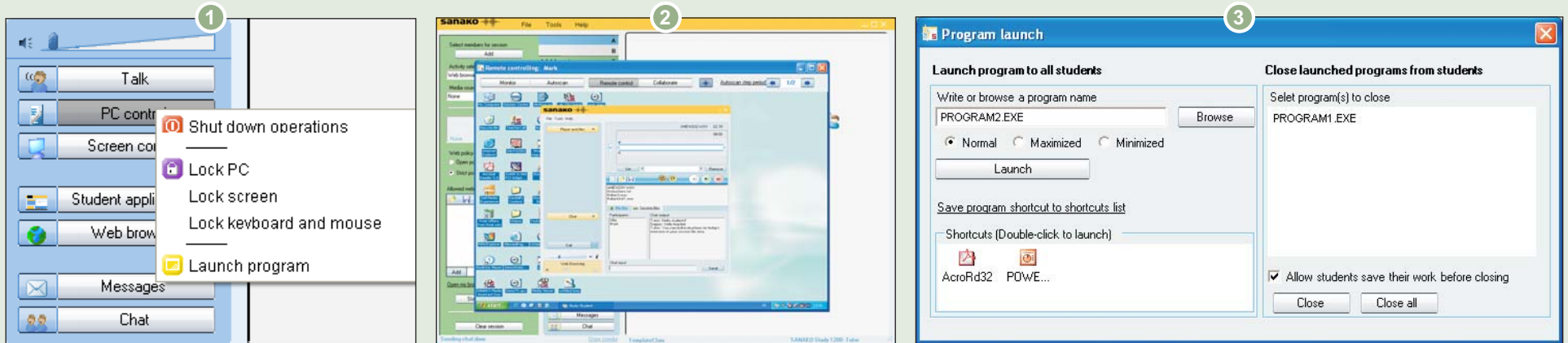
Study 500 offers different levels and methods of communication. Use voice communication to guide students through learning activities and demonstrations.

Text communication allows teachers to interact and monitor students without disturbing the entire class.

Chat communication can be used to interact with individual students without class disruption, and can also form the basis of new and interactive learning activities.

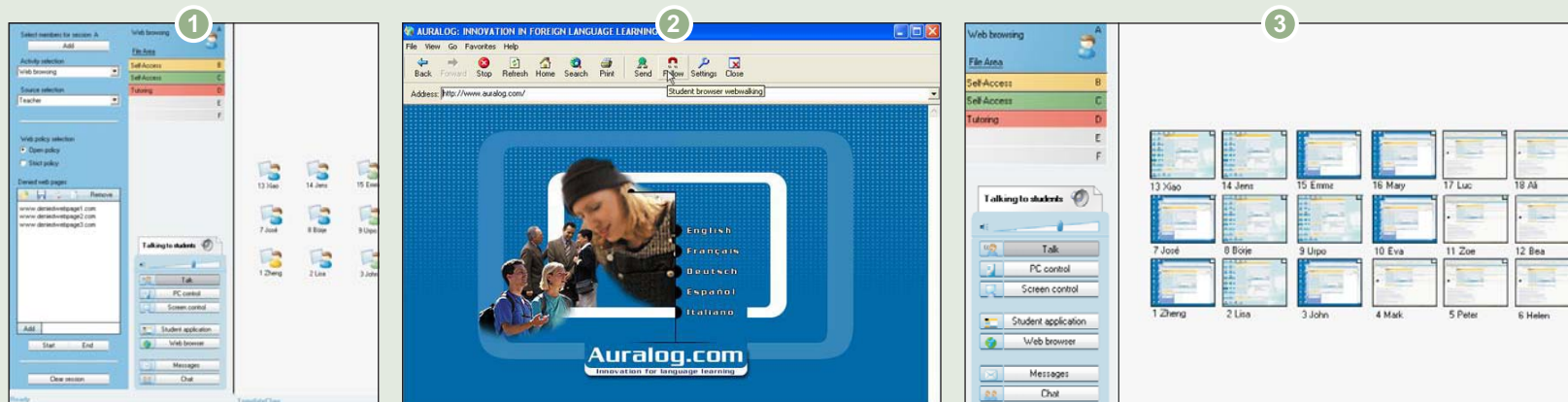
## Classroom Control Features for Effective Teaching

- 1 Key remote control features give teachers the confidence that they can help students focus fully on assigned tasks.
- 2 Teachers can take command of students' screens and monitor their work.
- 3 Launching files and applications for students is easy. Teachers can even perform log off and shutdown routines on student computers.



## A Controlled Approach to Web Browsing

- 1 Teachers can initiate and control Web-based activities for the entire class or for a group of students.
- 2 The software makes it easy to take students along on a web tour, and define allowed and restricted web pages to prevent students straying to unauthorized sites.
- 3 Scanning screens and student screen thumbnails ensure that students stay on track and on task.





## Flexible and Scalable – A Must for Every School

### Key Features in SANAKO Study 500

- Activity-based teaching sessions
- Screen transfer with audio
- Student monitoring
- Teacher to class voice communication
- Teacher to class text messaging
- Opening applications and files for students
- Teacher-led web browsing
- Remote access and teacher-student collaboration
- SANAKO Study 500 Media Player

**Upgrades and service patches available online!**

**More information from  
[www.sanako.com/study500](http://www.sanako.com/study500)**

SANAKO China: [www.sanako.com/china](http://www.sanako.com/china)  
 SANAKO France: [www.sanako.fr](http://www.sanako.fr)  
 SANAKO UK: [www.sanako-uk.com](http://www.sanako-uk.com)  
 SANAKO US: [www.sanako-us.com](http://www.sanako-us.com)  
 SANAKO Global: [www.sanako.com](http://www.sanako.com)

Teachers and administrators are free to enhance the Study 500 software by easily installing additional modules. These modules provide focused learning activities or additional classroom management functions.

### Modules available in 2006 include:

- PC Protection Module
- Video Streaming Module
- Assessment Module
- Workflow Module

### Network Requirements

Multicast transmission has to be enabled in the network.  
 NOTICE: WLAN has some limitations for multicasting, please contact SANAKO support for advice.

### System Requirements

- Microsoft® Windows® 2000 or XP
- 1 GHz Processor
- 256 MB Memory
- 15" Monitor
- AC97 compatible sound card (\*)
- Network Adapter

*\* Please contact your local distributor for a list of suitable sound cards.*

Microsoft and Windows are either registered trademarks or trademarks of Microsoft Corporation in the United States and/or other countries.



### SANAKO Corporation

P.O. Box 41, FI-20741 Turku, Finland  
 Phone +358 2 2166 500 • Fax +358 2 2166 527  
[info@sanako.com](mailto:info@sanako.com), <http://www.sanako.com>  
 SANAKO User Club and Discussion Forum:  
<http://members.sanako.com>